



# Fast Electromagnetic Analysis Suite (FEMAS)



## Causality and Passivity (CaP) Tool

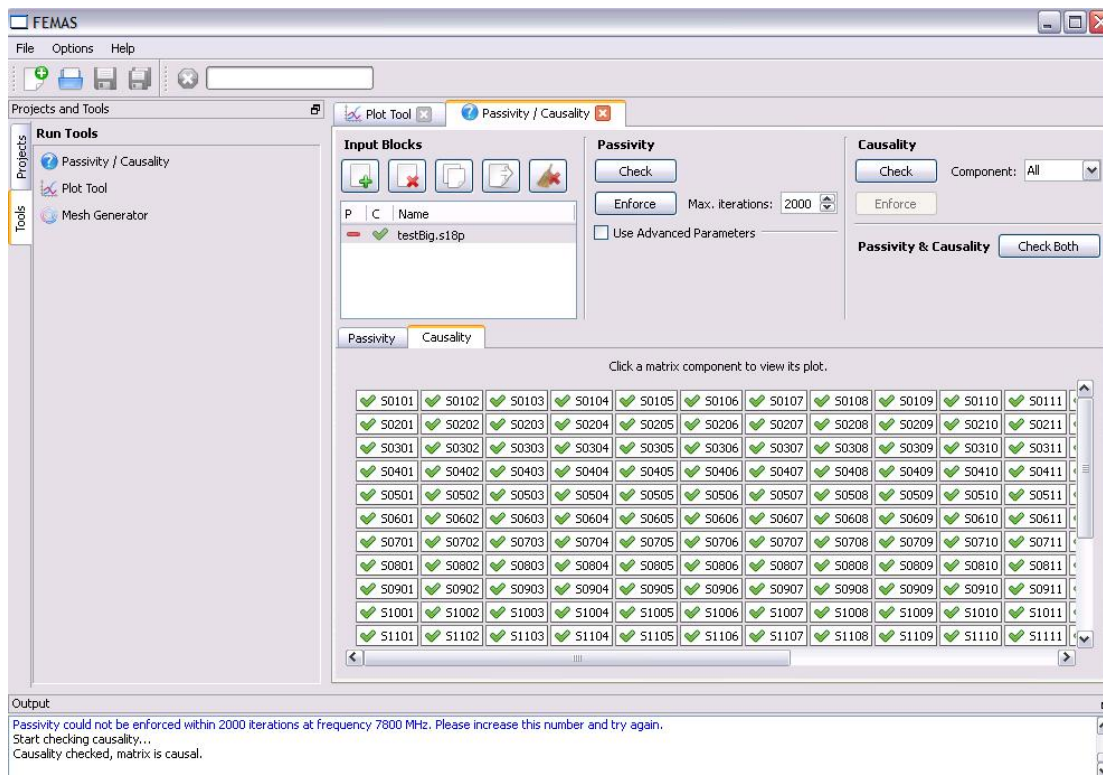
CaP is an **easy to use** tool to check the passivity and causality of S-parameter files. Both measured results and simulation results can result in non-causal and/or non-passive data. Using such non-passive or non-casual data for signal integrity analysis can result in incorrect results.

Any size S-parameter file can be used. Data is read directly from touchstone files, and the user can perform the analysis on any individual S-parameter

or all S-parameters. A matrix of red/green indicators show if a particular S-parameter is causal and/or passive. Users can view the results for each S-parameter to see how badly the S-parameter fails the test.

### Enforce Causality and Passivity

If an S-parameter file fails causality and/or passivity, users can select to force causality and then save the corrected file for use in further analysis.



For more information contact [info@MossBayEDA.com](mailto:info@MossBayEDA.com)